

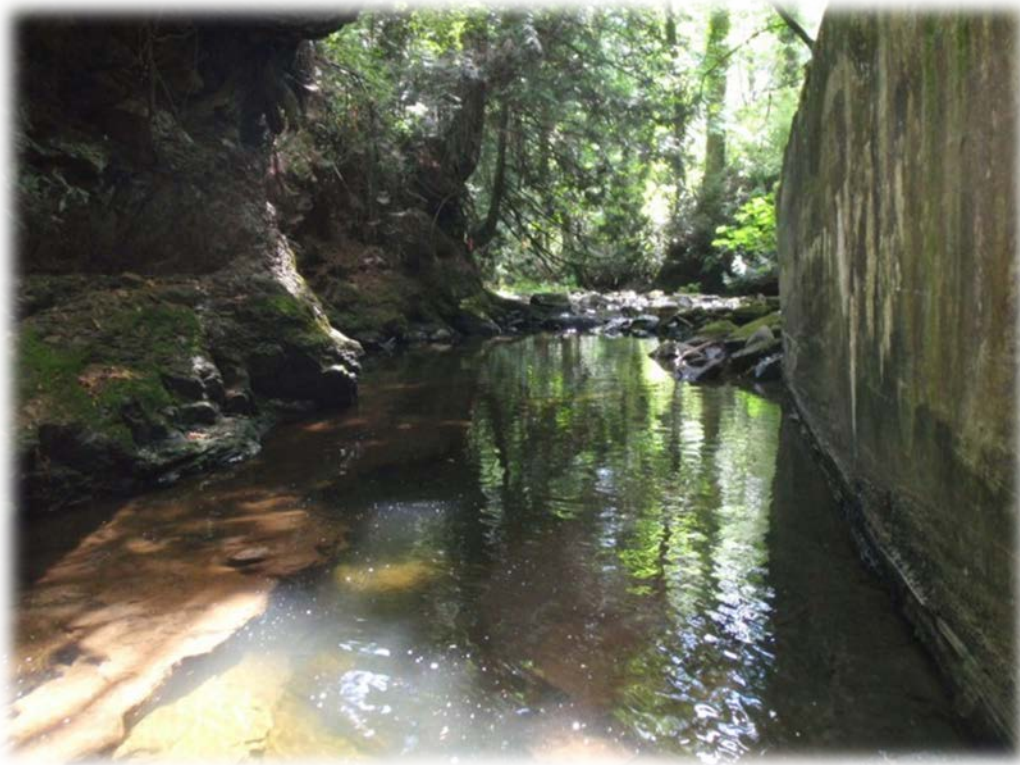
Chase River Culvert Project 2011

Harry McLeod coordinated the volunteers for the installation of the baffles at the Chase River culvert under the E&N Rail Line. These baffles will enable more Coho to access the great spawning grounds in the Cat Stream, Jingle Pot Marsh as well as the Chase River. It is interesting how these baffles were designed to allow the fish to move through the culvert. (From email) Harry is the conservation chair in the IWFF and does great work on behalf of our club for the community.

Hi All,

It looks like we are still on schedule for construction starting August 23 (Tuesday). The baffles are nearly complete and will be picked up this Friday and then staged on Monday by the rail crane. I talked to Bernie just over a week ago and discussed the opportunity for volunteers to lend a hand on the 23 and 24. (From Kevin Pellett, B.Sc. BC Conservation Foundation)





The culvert on the Chase River





Turfer enables one person to pull rocks with a cable



Using a sling to move a rock into place for a weir

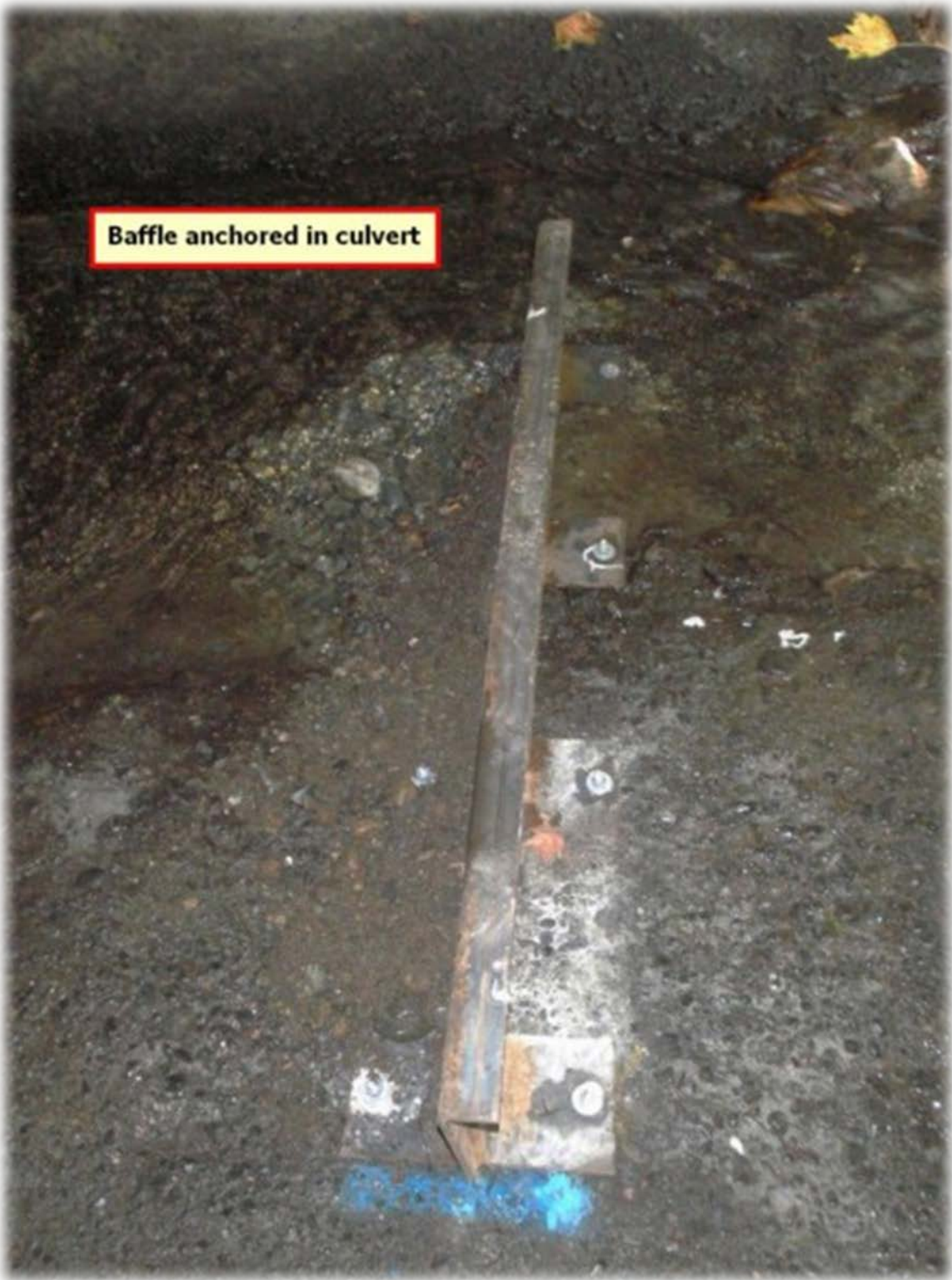


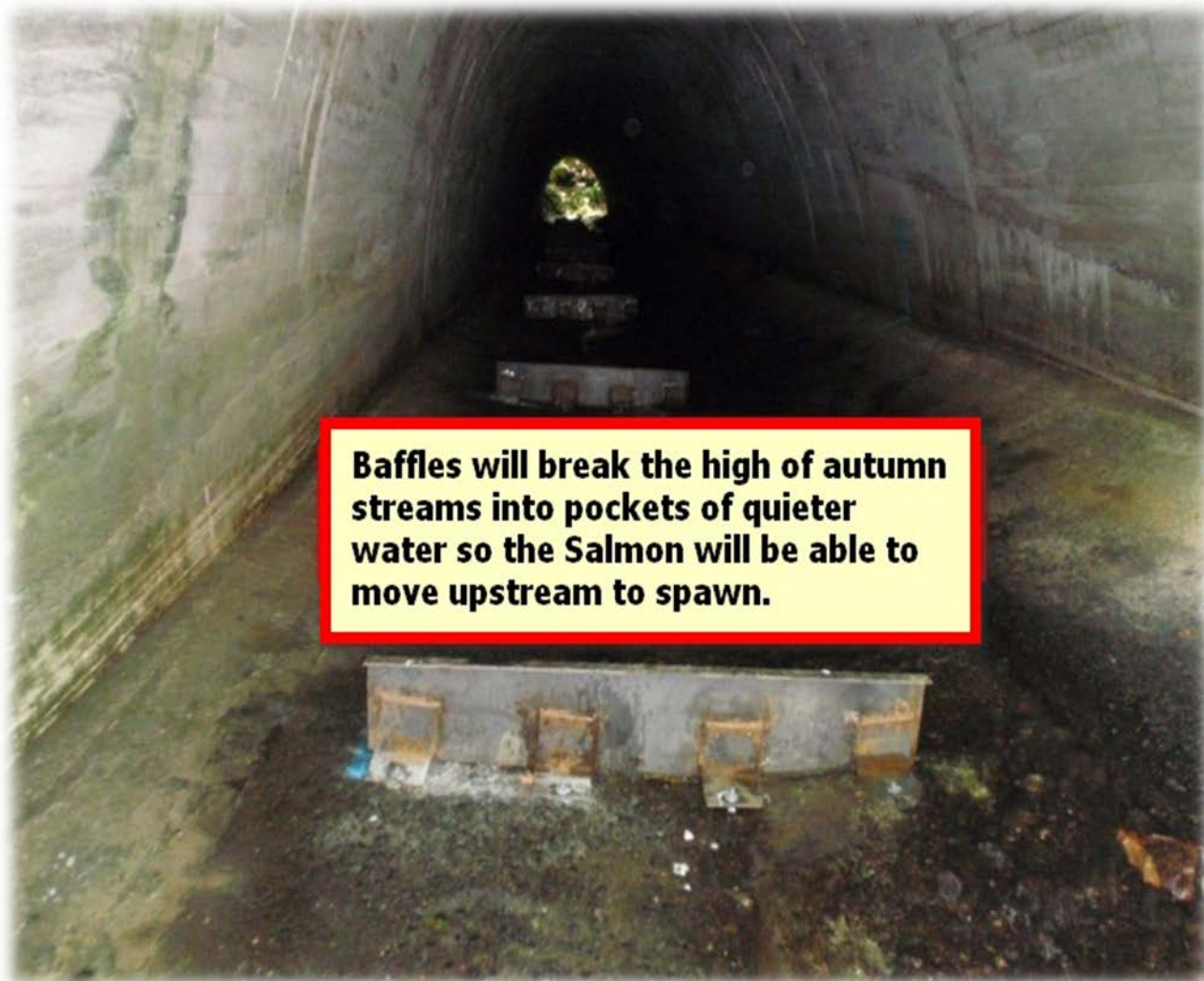
Weir taking shape



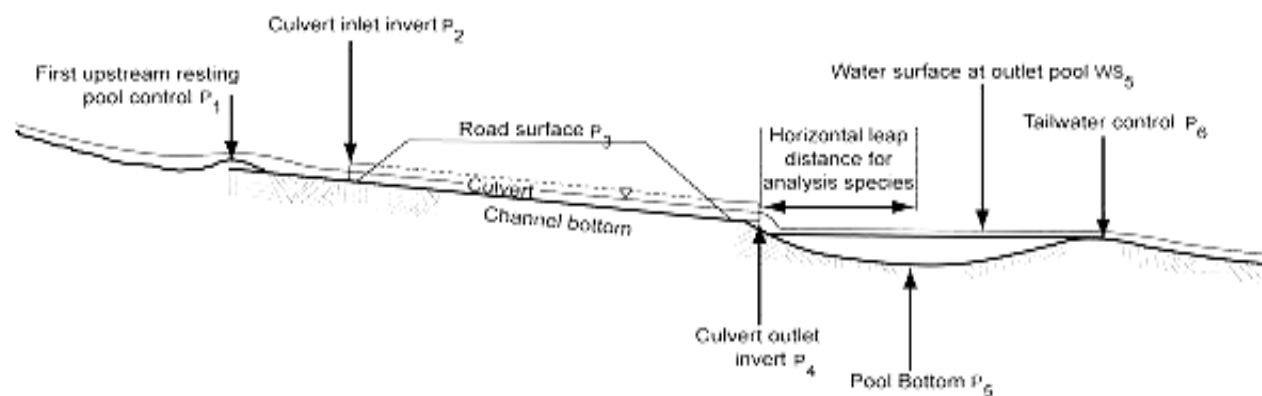
A Good spawning stream has pools and riffles and spawning gravel. It also has deep pools and undercut banks and fallen trees to provide shade and shelter from predators of the young Salmon. The banks should have trees, shrubs and grasses to stabilize them. All these also provide cooler temperatures during summer.

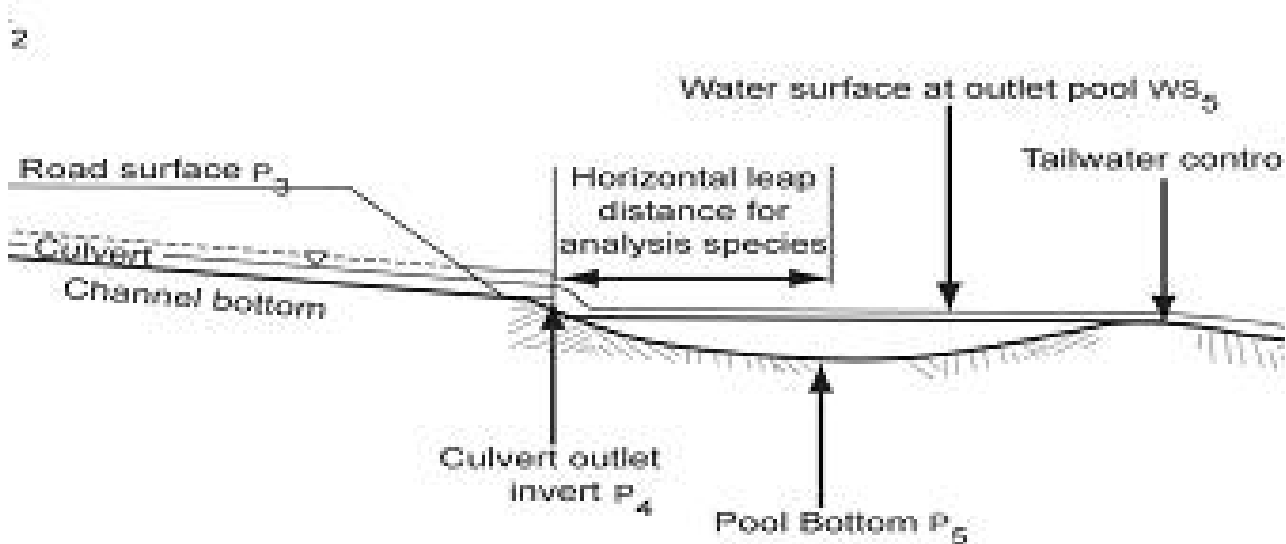
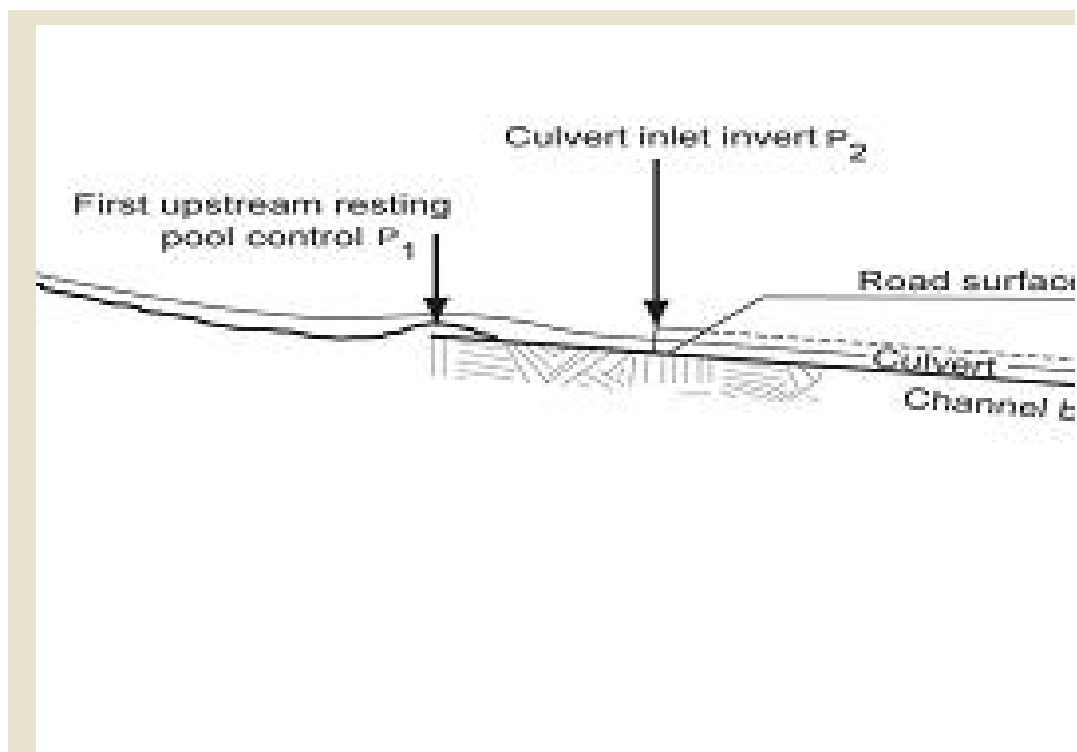
Baffle anchored in culvert





Below – a diagram showing typical design for fish friendly culvert





The purpose of the stone weir above the culvert is shown above as an upstream resting pool.

The pool below serves as a resting pool for fish if a jump has to be made to enter the culvert. These are designed to allow fish to get through or keep them out if need be.